

G5

TECHNICAL SPECIFICATIONS



Feature	Description
External power supply	12 Vdc 1.5 W
User interface	HTTP browser, connected to G5 either directly or through an Ethernet / TCP/IP network
Ethernet interface	10/100Base Auto detect
MCU	STM32F207 Cortex M3 @120MHz
Security features	Access to user interface is password protected
Monitorable power devices	All Gamatronic UPSs and dc power systems that utilize any of the following protocols: SEC, Megatec, PowerPlus
RS232 serial connection	DB9 (to UPS or power system)
Client shutdown software	Shutdown-Agent
Cellular	3G Sagemcom GSM modem, SIM card slot
Email & SMS alarm notification	20 targets
SNMP	Version 2: filtering by manager and community Version 3: Authentication and privacy features supported
SNMP trap notification	10 targets
Input voltage-free contacts	13, includes 5 for optional kWh monitoring and 1 for flood detection
Output voltage-free contacts	5, programmable (event triggered, auto-return)
Temperature sensor inputs	3
Humidity sensor inputs	1
Analog inputs	4; can be used for voltage and current measurements as well as for generic sensors (0 to 5 volts range, not isolated)
kWh pulse metering inputs	5
System log	Stores all readings for last 1000 alarm conditions
Operating Temperature Range	0 °C to +60 °C
Storage Temperature Range	-10 °C to +65 °C
Dimensions WxDxH (mm)	183 x 150 x 1U (without 19" extension)

* All specifications are subject to change without advance notice.

Gamatronic G5



GAMATRONIC ELECTRONIC INDUSTRIES LTD.

Headquarters and Factory

17 Hartom St. POB 45029, Jerusalem 91450, Israel
Tel: +972-2-5888222 Fax: +972-2-5828875
e-mail: info@gamatronic.co.il
www.gamatronic.com

Gamatronic UK Ltd.

15 Chester Road, Colmworth Business Park, Eaton Socon,
Cambridgeshire, PE19 8YT, United Kingdom
Tel: +44 (0)1480 479889/ 472665 Fax: +44(0)1480 407865
e-mail: info@gamatronic.net



G5

the new communication device that combines the abilities of power system monitoring with useful extras



G5 is the new communication device that combines the abilities of power system monitoring with useful extras, including the monitoring of volt-free contacts for external devices, environmental sensing, and even voltage and current measurements. It includes various methods for informing the end user of alarm conditions, including SMS, email and other means.

The entire configuration is based on the built-in web interface, which is password protected and is accessible locally or remotely through any web browser.

The interface is intuitive and simple, making the configuration straightforward.

G5 enables remote monitoring for all current Gamatronic products. It also includes specialized power-oriented features, like monitoring KWH pulse meters and sending reports to the end user.

I/O

- Input volt-free contacts: up to 13, out of which 5 can be used for KWH pulse metering and one for water detection
- Output volt-free contacts: 5, programmable, all are changeover type
- Temperature sensors: 3
- Humidity sensor: 1
- Analogue inputs: 4, can be used for generic sensors or voltage/current measurements
- KWH pulse metering: up to 5
- RS232 Port for power system monitoring

FEATURES

- Up to 20 recipients for email or SMS notifications
- Eight configurable groups for proper configuration of alarm notifications
- Remote computer shutdowns with shutdown agent software

- SNMP v2c/v3 communication – all UPS protocols are normalized to RFC 1628 (Standard UPS Protocol)
- RS232 communication supports all Gamatronic UPS systems through SEC, PowerPlus and Megatec protocols
- Environment measurements allow monitoring temperatures, humidity, and other generic sensors with simple configuration
- Voltages and currents can be measured as well, normally with assistance of external isolating devices from Gamatronic
- Optional GSM modem allows sending and receiving SMS with configurable alarm notifications
- Comprehensive event configuration is available for controlling alerts being sent to the users
- Full featured log includes complete system snapshot saved for every event
- Smart physical design promises easy connections and installation, in both stand-alone and 19" types

CAD MODEL

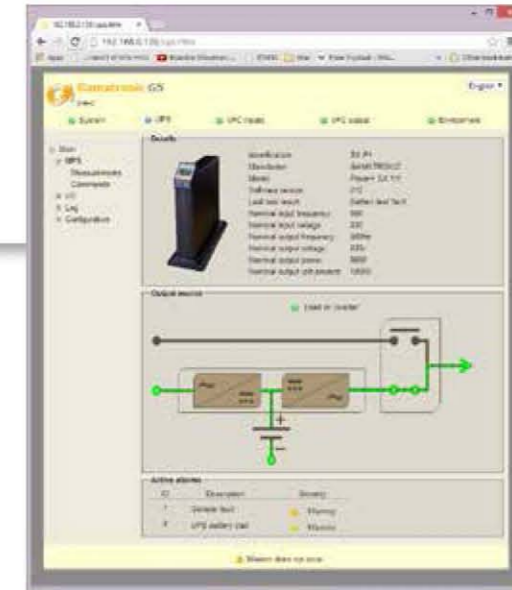


Front, with 19" extensions



Rear, with top cover open

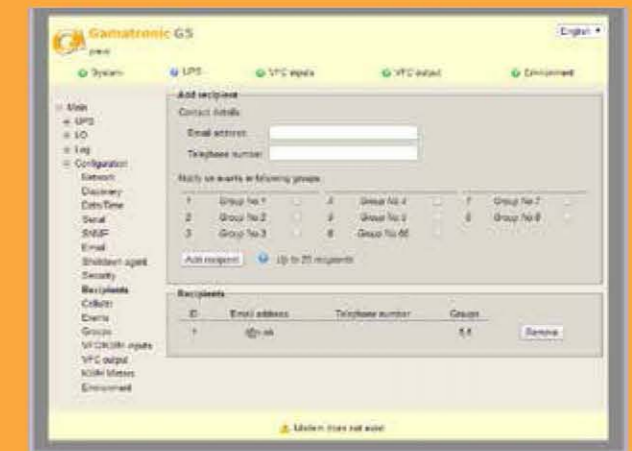
WEB INTERFACE



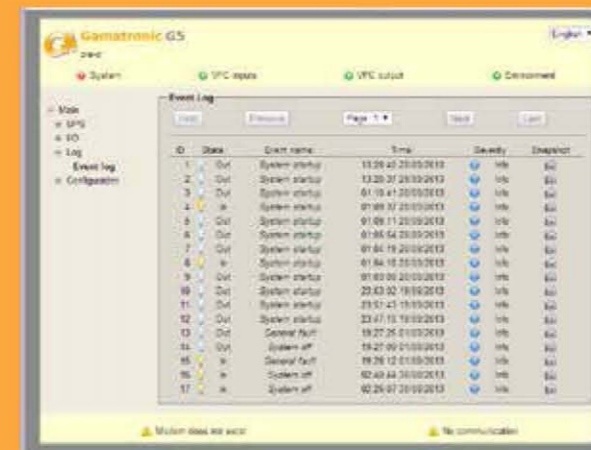
SPECIFIC SCREENS FOR I/O



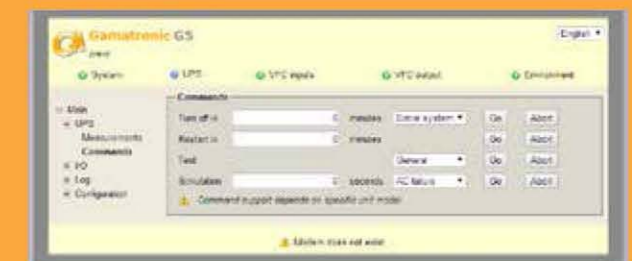
Contacts



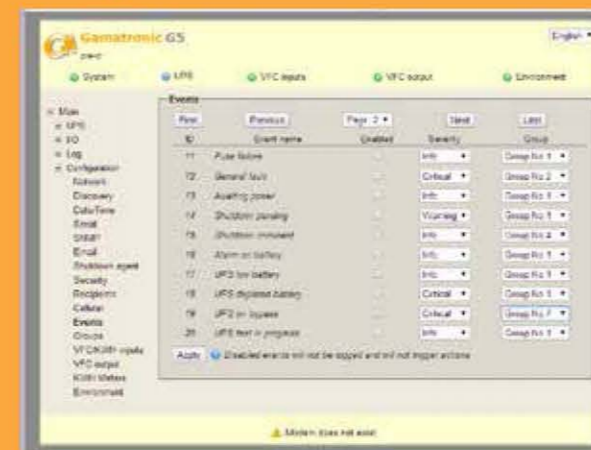
Recipients



Eventlog



Upscmds



Events